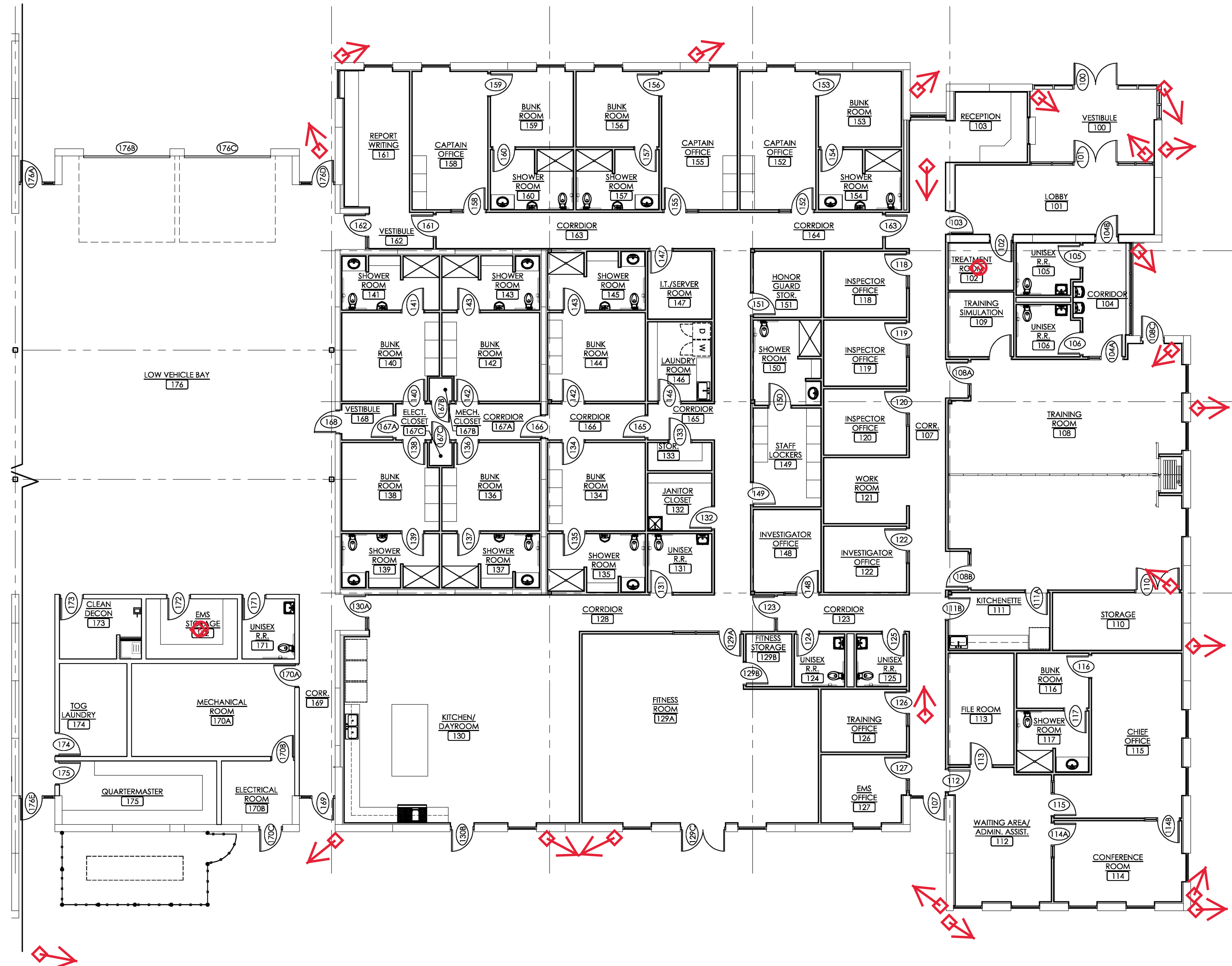


THIS DESIGN DRAWING OR PRINT IS THE PROPERTY OF M & G ARCHITECTS AND ENGINEERS, INC. AND IS SUBJECT TO RETURN ON REQUEST. THE DESIGN CONCEPTS AND INFORMATION CONTAINED HEREIN ARE PROPRIETARY TO THIS COMPANY AND ARE SUBMITTED IN CONFIDENCE. THEY MUST NOT BE DISCLOSED, COPIED, REPRODUCED OR OTHERWISE USED IN ANY MANNER WITHOUT THE WRITTEN CONSENT OF M & G ARCHITECTS AND ENGINEERS, INC.

23 External
 6 Internal
 2 Internal Fish-eye with audio (one with independent recording to video device and selective on/off)



DRAWING STATUS

DESIGN STAGE:

- SCHEMATIC DESIGN
- DESIGN DEVELOPMENT
- CONSTRUCTION DRAWINGS

RELEASED FOR:

- REVIEW
- BIDDING
- CONSTRUCTION

CITY OF WHEELING
W.P.D. - FIRE HEADQUARTERS
 17TH STREET, WHEELING, WV 26003
LOW BAY - FIRST FLOOR PLAN

REVISION

NO.	DESCRIPTION

DRAWN BY: C. BRONDER	CHECKED BY: D. GRANT
PROJECT NO. 20-108B	
SCALE: AS NOTED	DATE: 7/26/2021

1 LOW BAY - FIRST FLOOR PLAN
 A1.1 SCALE: 1/8" = 1'-0"

THIS DESIGN DRAWING OR PRINT IS THE PROPERTY OF M & G ARCHITECTS AND ENGINEERS, INC. AND IS SUBJECT TO RETURN ON REQUEST. THE DESIGN CONCEPTS AND INFORMATION CONTAINED HEREIN ARE PROPRIETARY TO THIS COMPANY AND ARE SUBMITTED IN CONFIDENCE. THEY MUST NOT BE DISCLOSED, COPIED, REPRODUCED OR OTHERWISE USED IN ANY MANNER WITHOUT THE WRITTEN CONSENT OF M & G ARCHITECTS AND ENGINEERS, INC.

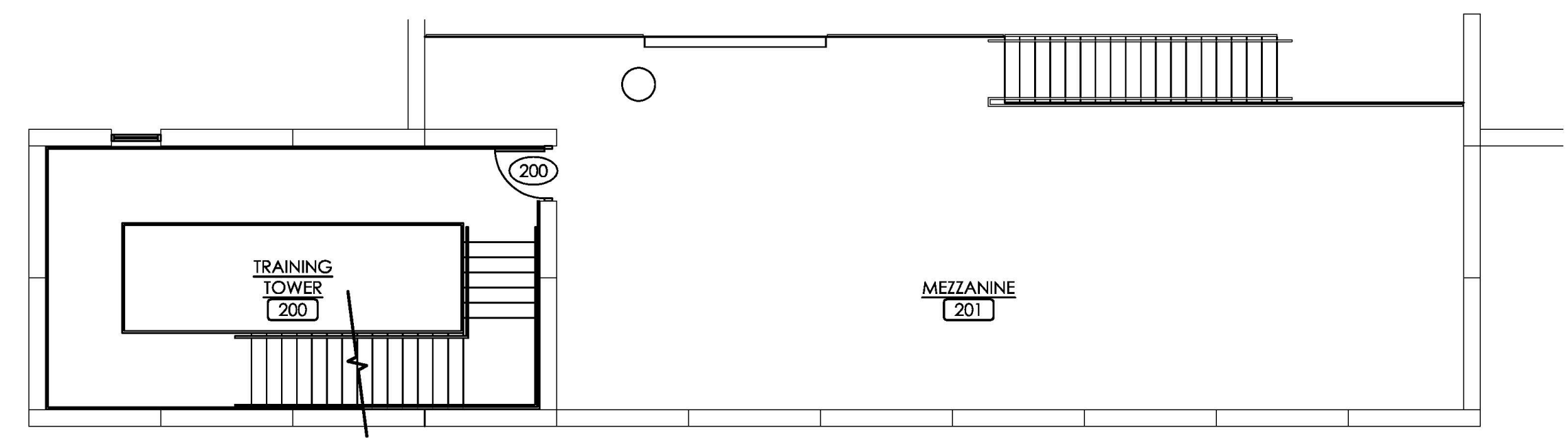
DRAWING STATUS	
DESIGN STAGE:	
<input type="radio"/>	SCHEMATIC DESIGN
<input type="radio"/>	DESIGN DEVELOPMENT
<input type="radio"/>	CONSTRUCTION DRAWINGS
RELEASED FOR:	
<input type="radio"/>	REVIEW
<input type="radio"/>	BIDDING
<input type="radio"/>	CONSTRUCTION

CITY OF WHEELING
W.P.D. - FIRE HEADQUARTERS
 17TH STREET, WHEELING, WV 26003
HIGH BAY - FIRST FLOOR PLAN

REVISION	

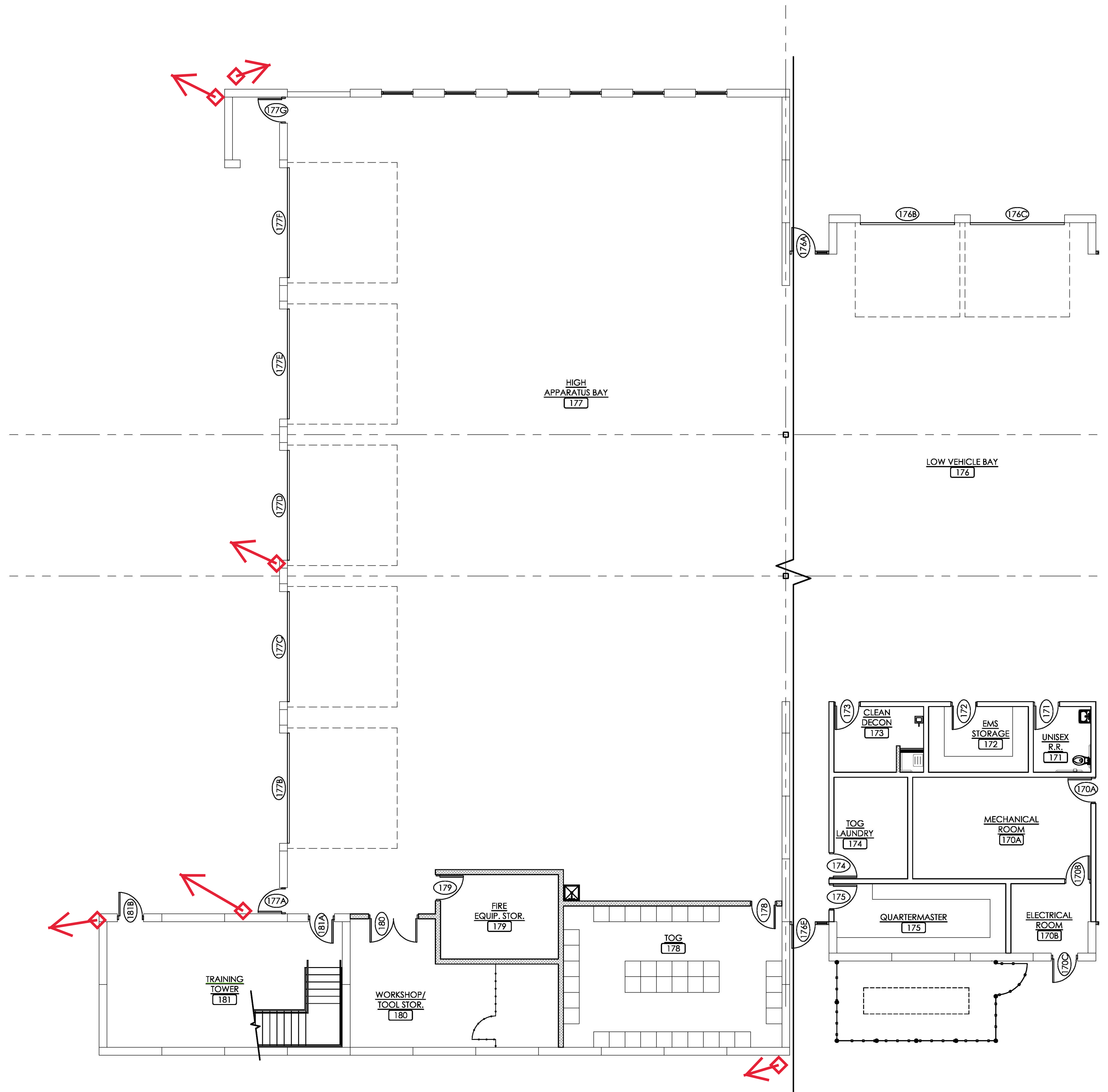
DRAWN BY: C. BRONDER	CHECKED BY: D. GRANT
PROJECT NO. 20-108B	
SCALE: AS NOTED	DATE: 7/26/2021

SHEET
A1.2



2 MEZZANINE PLAN
 A1.2 SCALE: 1/8" = 1'-0"

Add additional cameras in employee parking lot



1 HIGH BAY - FIRST FLOOR PLAN
 A1.2 SCALE: 1/8" = 1'-0"