

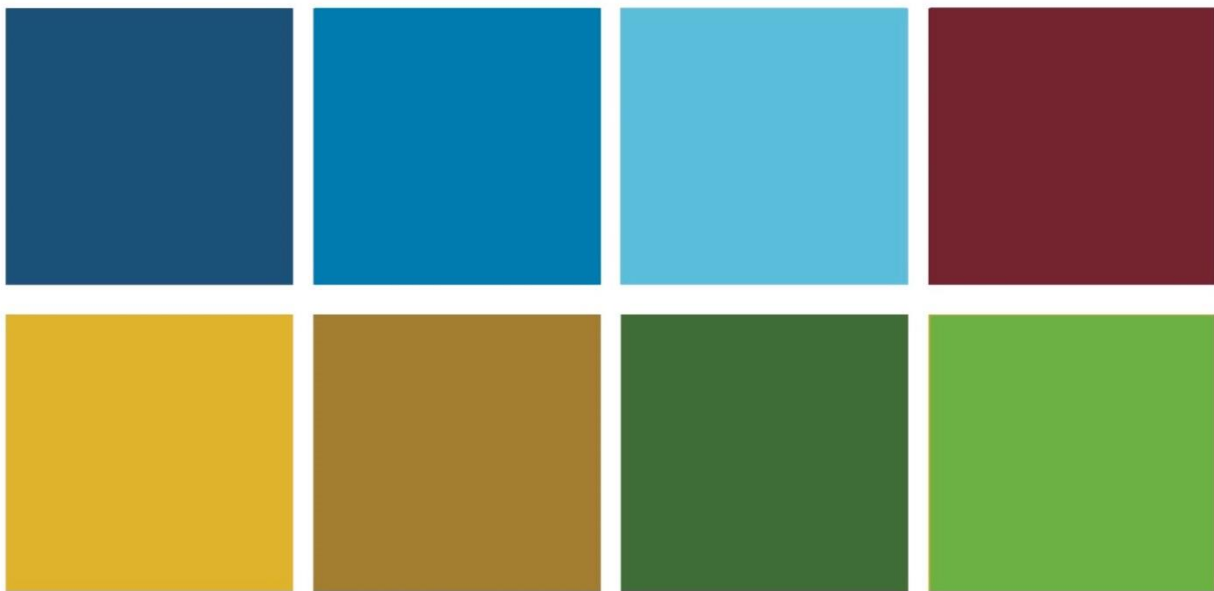


Request For Proposal

Wheeling Playground: Garden Park

The City of Wheeling will be accepting proposals for the purchase of equipment, materials, etc. and installation thereof for the Garden Park Playground Project. We are searching for something beyond the cookie-cutter classic playground. We want something different and memorable for the Garden Park playground area. We are looking for designs that best utilize the space provided for all ages and abilities. This playground will be a turnkey operation. It will include playground apparatus, installation, protective surfacing and borders. The entire playground will be bordered with plastic border material, under laid with geo-textile fabric and covered with adequate amount of Engineered Wood Fiber to meet or exceed National Playground Institute standards. This playground must comply with all current ADA, IPEMA, CPSC and ASTM standards.

When submitting proposals, please keep in mind that these color swatches reflect the city’s community branding and should be considered when selecting equipment. We are in the process of rebranding our community and would like this to contribute to the overall identity.



Contractor doing install will also be required to be licensed by the State of WV and the City of Wheeling and pay appropriate B&O taxes for their work performed in the City of Wheeling. A building permit (fee waived) must also be obtained by Contractor.

The City of Wheeling Parks & Strategic Planning Department has \$100,000 budgeted for the Garden Park playground project. Therefore, please keep the budget in mind when submitting a proposal. Interested parties must submit one or more designs for consideration. Estimated square footage will be provide below.

Playground Addresses:

Garden Park Play Area

1301-1549 Richland Avenue

Wheeling, WV 26003

Coordinates: 40.115189, -80.700395

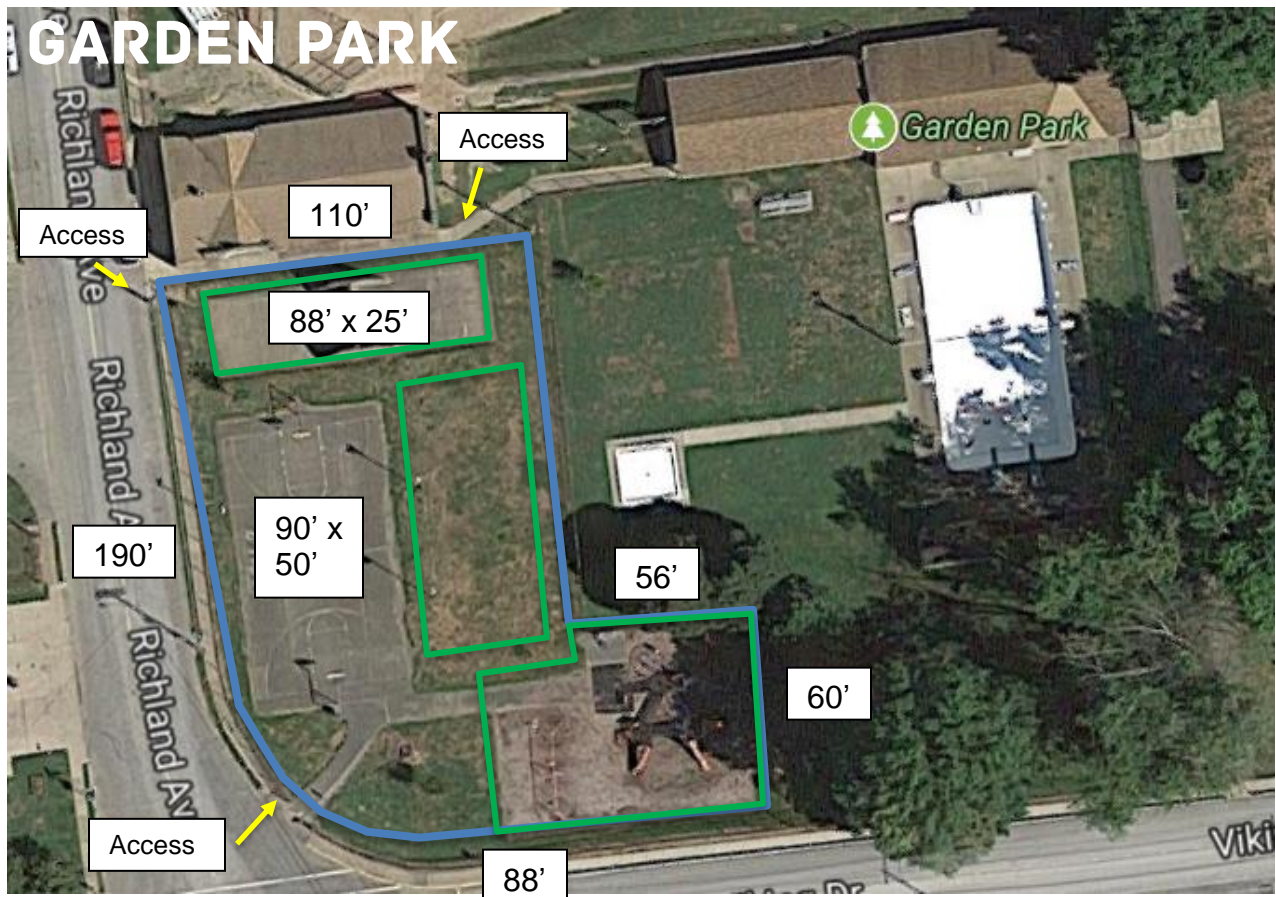
Basketball Court: 90' X 50' will remain on site and will be resurfaced after playground install

Old Handball Court (concrete pad): 88' X 25'

Current Playground Area: 60' X 88'

Total Area Size: 190' X 166'

This playground will be geared for children ages 5-12 and should accommodate up to 65 children. We are looking to redesign the entire play area (blue). We are looking for designs that best utilize the space provided for all ages and abilities.



A panel comprised of City of Wheeling staff, user groups, and stakeholders will review and assess each proposal in the following categories:

- ❑ Cost
- ❑ Quality
- ❑ Innovative Design
- ❑ Visual Appeal
- ❑ Number & type of features

Interested parties can submit proposals complete with drawings, elevations and/or pictures and material specifications to the Parks & Strategic Planning office **not later than 5:00pm on Monday, August 7, 2017**. Questions can be directed to Jesse Mestrovic – Director at (304) 234-3655 or JMestrovic@wheelingwv.gov.

The city may request an interview to discuss the contents of proposals. The city reserves the right to accept, reject, or modify any proposal which the city believes is in its best interest at any time.

Proposals must be mailed, emailed, delivered, and/or received by the due date to:
Parks & Strategic Planning
Attn: Playground Proposal
1500 Chapline Street, Suite 308
Wheeling, WV 26003